



U Bend TT Bar Installation Instructions



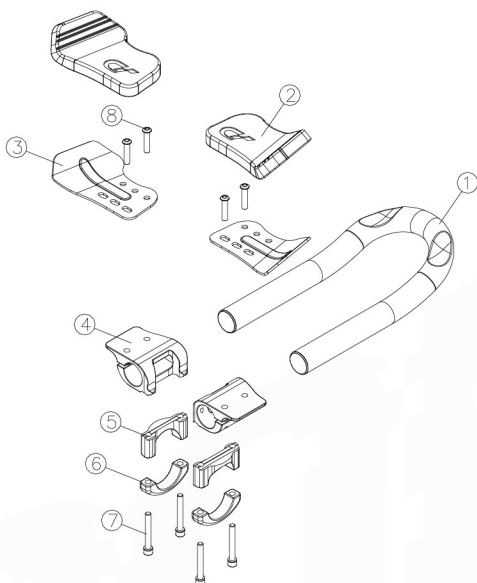
說明

感謝購買Controltech產品。請詳讀此安裝說明書並遵循正確使用方式，若沒有遵從說明書警告事項而導致產品損壞則不再保固範圍內。

保固

從購買日起Controltech提供兩年產品保固。消費者請保留產品保證書或相關的購買證明 (如發票或收據)。產品在保固期內有需要維修服務時，煩請提出保證書或相關購買證明。

Controltech保固不包括錯誤或惡意之損壞，也不包含跳躍摔倒降落衝擊或其他的碰撞，以及忽視定期保養和錯誤零件組裝。另外，私自改裝、增加或替換產品上的零件，是不包含在保固內。自然的損壞也不包含在保固範圍內。

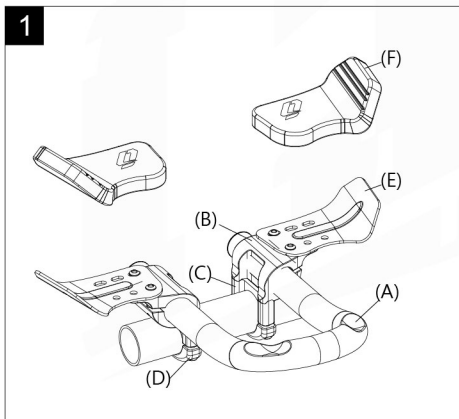


產品名稱 / 型號

U Bend TT Bar / TTH-14

零件名稱

- ① U型短把主體x1
- ② 靠墊 x2
- ③ 手肘板 x2
- ④ G夾 x2
- ⑤ C夾 x2
- ⑥ 下蓋 x2
- ⑦ M5螺絲 x4(38mm)
- ⑧ M5螺絲 x4(25mm)



安裝說明

1. 安裝前檢查產品外觀是否整潔或有任何粗糙瑕疵，為避免傷及產品。有的話請聯繫經銷商或車店。
2. 將(A)U型把手安裝至(B)G夾，再裝配(C)C夾及墊片。
3. 將把手安裝在車手中段處並組裝(D)下蓋，再將螺絲旋緊(鎖固最大扭力值5Nm)。
4. 最後安裝(E)手板及(F)手肘靠墊。





U Bend TT Bar Installation Instructions

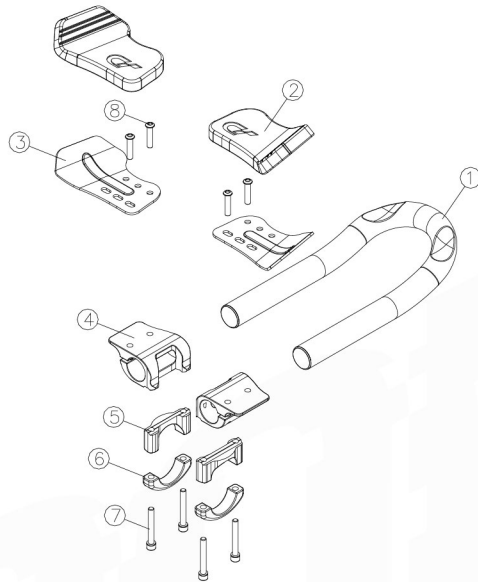


Thank you for choosing this Controltech. With proper care and installation, it will give you trouble-free, enjoyable use.

In order to maximize the safe enjoyment of this product, you should read and carefully follow the following installation instructions and warnings. Failure to do so could result in unexpected wear and/or failure, possibly resulting in injury.

Controltech warrants this product to be free from defects in materials and workmanship for a period of two years from the date of purchase when purchased from an authorized Controltech dealer. This warranty is extended only to the original owner of the product and is not transferable. Proof of purchase is required for any warranty service, so be sure to keep your receipt.

This warranty does not cover cosmetic or structural damage arising from misuse or abuse, including damage caused by crashes, jumping and landing, front end impact, falls or any other collision, owner neglect of regular maintenance, improper installation of parts and accessories. Controltech makes no warranty if modifications, changes, additions or substitutions are made to any components. Wear from normal use or exposure to environmental elements is not covered by this warranty. Controltech makes no warranty against any incidental or consequential damage to bike or parts, or rider injury caused by defects as covered in this warranty.

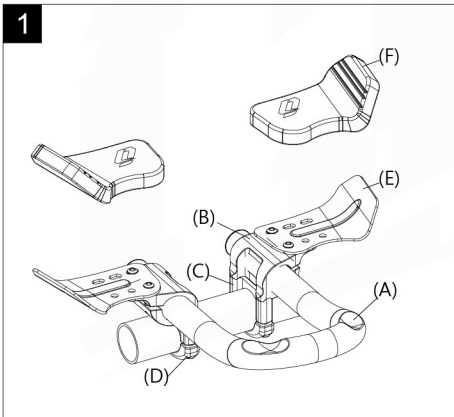


Model name / Model no.

U Bend TT Bar / TTH-14

Part

- ① U-Bend extension x1
- ② Elbow pad x2
- ③ Elbow pad cradle x2
- ④ G Clamp x2
- ⑤ C Clamp x2
- ⑥ Lower clamp x2
- ⑦ M5 bolts x4(Length 38mm) x4
- ⑧ M5 bolts x4(Length 25mm) x4



Installation Instructions:

1. Inspect the product for any defectives before installation and please contact the dealer or distributor if any.
2. Insert alloy (A)U-Bend extension into (B)G clamp and assemble (C)C clamps with spacers.
3. Mount the aerobar body on the handlebar clamping area with the (D)lower clamps by tightening the M5 bolts. (Max. torque 5Nm).
4. Assemble with (E)elbow pad cradle with (F)elbow pad.





Impel Mini Clip-On Installation Instructions



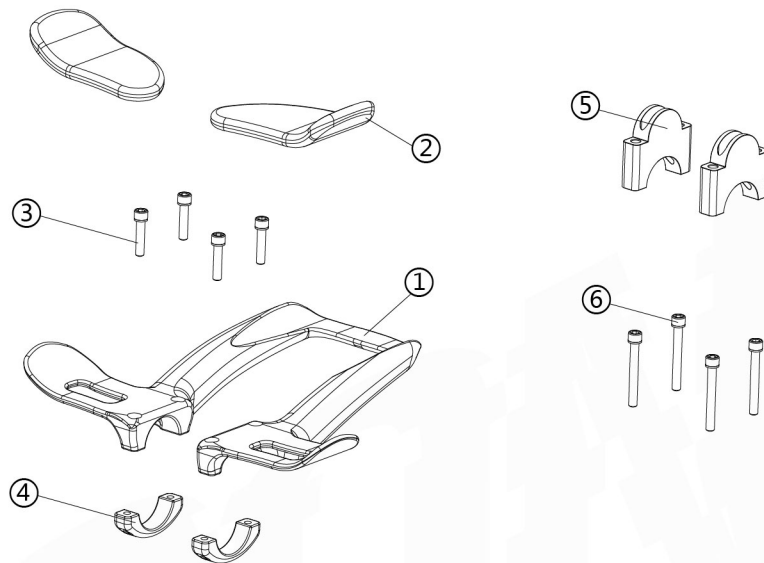
說明

感謝購買Controltech產品。請詳讀此安裝說明書並遵循正確使用方式，若沒有遵從說明書警告事項而導致產品損壞則不再保固範圍內。

保固

從購買日起Controltech提供兩年產品保固。消費者請保留產品保證書或相關的購買證明 (如發票或收據)。產品在保固期內有需要維修服務時，煩請提出保證書或相關購買證明。

Controltech保固不包括錯誤或惡意之損壞，也不包含跳躍摔倒降落衝擊或其他的碰撞，以及忽視定期保養和錯誤零件組裝。另外，私自改裝、增加或替換產品上的零件，是不包含在保固內。自然的損壞也不包含在保固範圍內。



產品名稱 / 型號

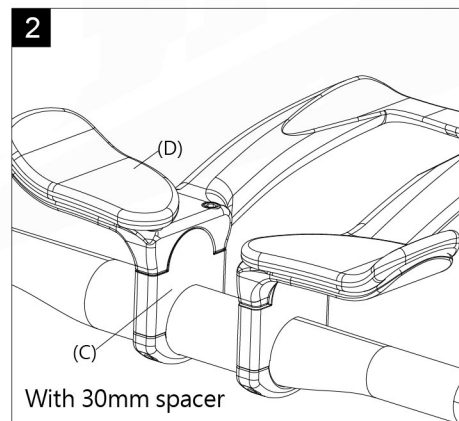
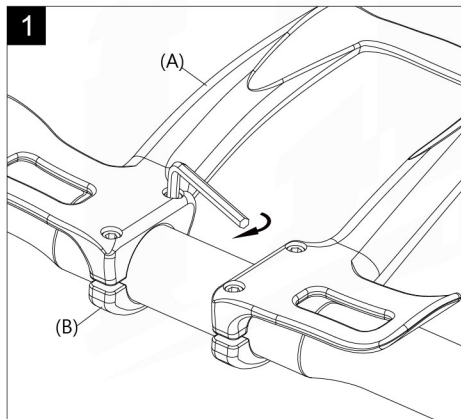
Impel Mini Clip-on / TTH-13

零件名稱

- ① U型短把主體 x1
- ② 手肘靠墊 x2
- ③ M5螺絲 x4(25mm)
- ④ 下蓋 x2

配件

- ⑤ 30mm墊片 x2(Need to purchase separately)
- ⑥ M5螺絲 x4(55mm)



安裝說明

1. 安裝前檢查產品外觀是否整潔或有任何粗糙瑕疵，為避免傷及產品。有的話請聯繫經銷商或車店。
2. 將(A)把手固定於跑車把手中段，並組裝(B)下蓋，再將螺絲旋緊 (鎖固最大扭力值5Nm)。
3. 搭配(C)30mm墊片可提供較舒適的騎乘姿勢。
4. 將(D)手肘靠墊固定於手肘板上。





Impel Mini Clip-On Installation Instructions

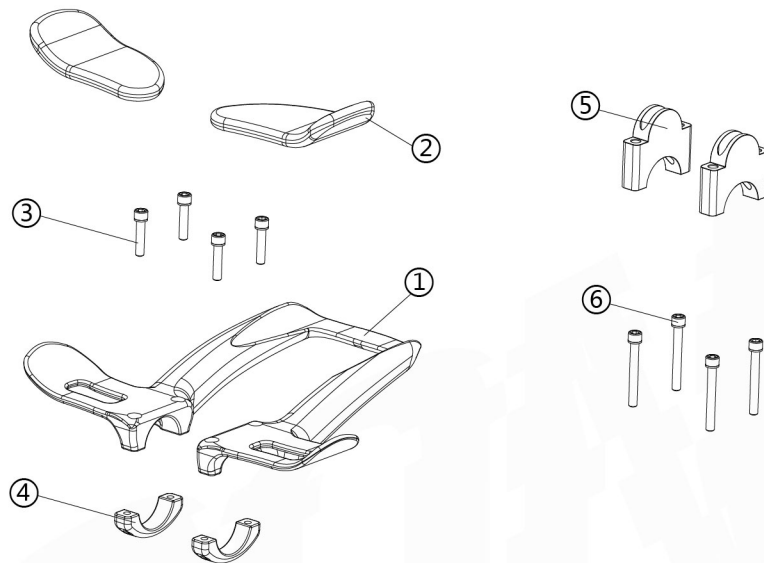


Thank you for choosing this Controltech. With proper care and installation, it will give you trouble-free, enjoyable use.

In order to maximize the safe enjoyment of this product, you should read and carefully follow the following installation instructions and warnings. Failure to do so could result in unexpected wear and/or failure, possibly resulting in injury.

Controltech warrants this product to be free from defects in materials and workmanship for a period of two years from the date of purchase when purchased from an authorized Controltech dealer. This warranty is extended only to the original owner of the product and is not transferable. Proof of purchase is required for any warranty service, so be sure to keep your receipt.

This warranty does not cover cosmetic or structural damage arising from misuse or abuse, including damage caused by crashes, jumping and landing, front end impact, falls or any other collision, owner neglect of regular maintenance, improper installation of parts and accessories. Controltech makes no warranty if modifications, changes, additions or substitutions are made to any components. Wear from normal use or exposure to environmental elements is not covered by this warranty. Controltech makes no warranty against any incidental or consequential damage to bike or parts, or rider injury caused by defects as covered in this warranty.



Model name / Model no.

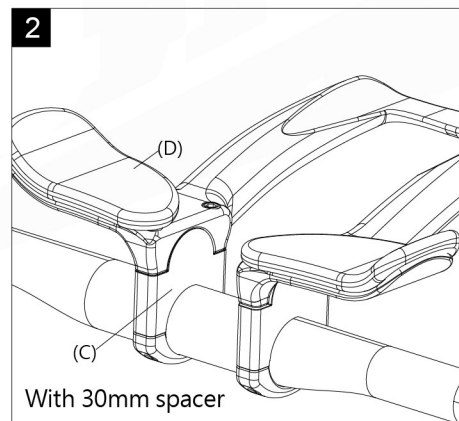
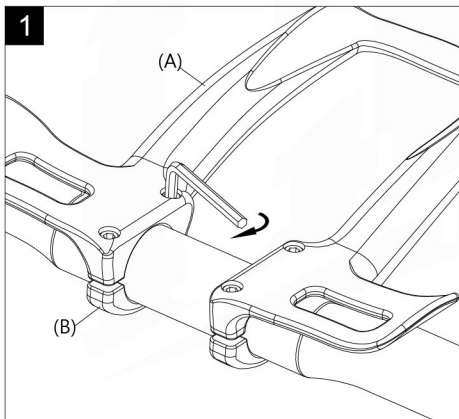
Impel Mini Clip-on / TTH-13

Part

- ① Carbon extension x1
- ② Elbow pad x2
- ③ M5 bolts (Length 25mm) x4
- ④ Lower clamp x2

Accessories

- ⑤ 30mm spacer x2 (Need to purchase separately)
- ⑥ M5 bolts (Length 55mm) x4



Installation Instructions:

1. Inspect the product for any defectives before installation and please contact the dealer or distributor if any.
2. Mount the (A) aerobar body on the handlebar clamping area with the (B) lower clamps by tightening the M5 bolts. (Max. torque 5Nm).
3. (C) 30mm height spacers are optional for the rider who seeks for higher stack with better riding position.
4. Assemble (D) elbow pad.

