



PAD-04心軸培林



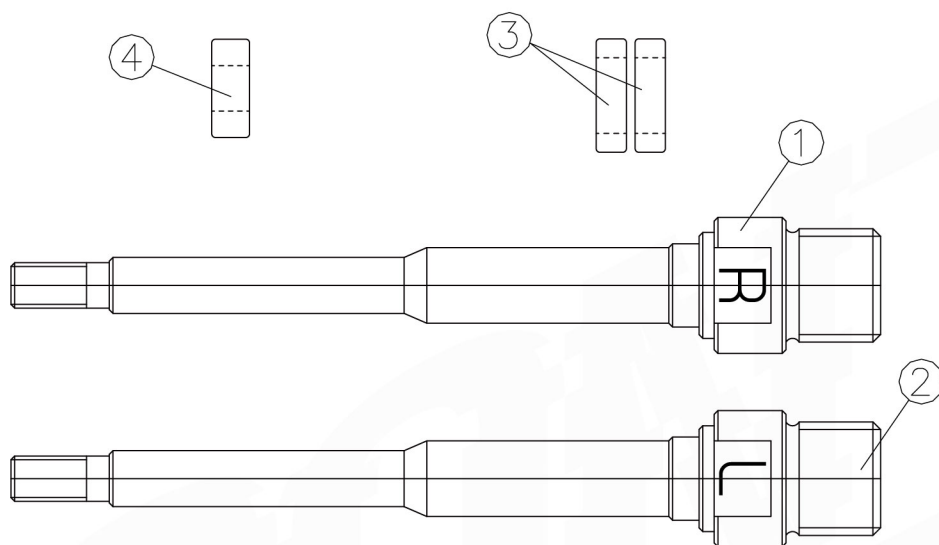
說明

感謝購買Controltech產品。請詳讀此安裝說明書並遵循正確使用方式，若沒有遵從說明書警告事項而導致產品損壞則不再保固範圍內。

保固

從購買日起Controltech提供兩年產品保固。消費者請保留產品保證書或相關的購買證明 (如發票或收據)。產品在保固期內有需要維修服務時，煩請提出保證書或相關購買證明。

Controltech保固不包括錯誤或惡意之損壞，也不包含跳躍摔倒降落衝擊或其他的碰撞，以及忽視定期保養和錯誤零件組裝。另外，私自改裝、增加或替換產品上的零件，是不包含在保固內。自然的損壞也不包含在保固範圍內。

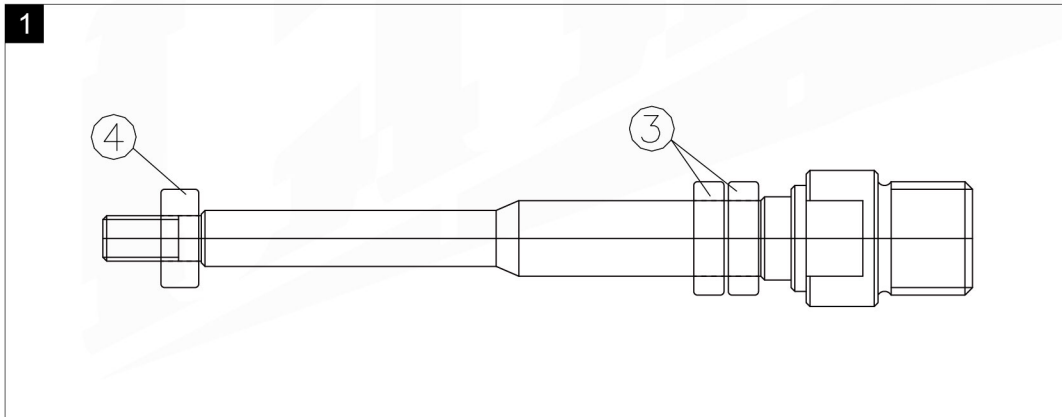


產品名稱 / 型號

PAD-04心軸配件

零件名稱

- ① 右心軸 x1
- ② 左心軸 x1
- ③ 大培林(Ø15x10mm) x4
- ④ 小培林(Ø13x6mm) x2



安裝說明

1. 安裝前檢查產品外觀是否整潔或有任何粗糙瑕疵，為避免傷及產品。有的話請聯繫經銷商或車店。
2. ③大培林安裝至心軸位置(Ø15x10mm)。
3. ④小培林安裝至心軸位置(Ø13x6mm)。



PAD-04 Repair Kit

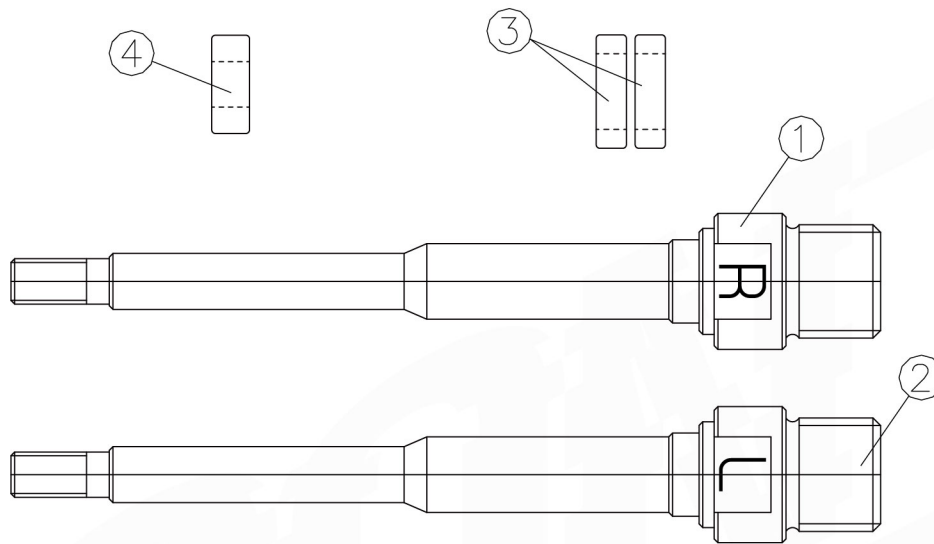


Thank you for choosing this Controltech Handlebar. With proper care and installation, it will give you trouble-free, enjoyable use.

In order to maximize the safe enjoyment of this product, you should read and carefully follow the following installation instructions and warnings. Failure to do so could result in unexpected wear and/or failure, possibly resulting in injury. Please read the following directions and helpful hints when installing your new handlebar.

Controltech warrants this product to be free from defects in materials and workmanship for a period of two years from the date of purchase when purchased from an authorized Controltech dealer. This warranty is extended only to the original owner of the product and is not transferable. Proof of purchase is required for any warranty service, so be sure to keep your receipt.

This warranty does not cover cosmetic or structural damage arising from misuse or abuse, including damage caused by crashes, jumping and landing, front end impact, falls or any other collision, owner neglect of regular maintenance, improper installation of parts and accessories. Controltech makes no warranty if modifications, changes, additions or substitutions are made to any components. Wear from normal use or exposure to environmental elements is not covered by this warranty. Controltech makes no warranty against any incidental or consequential damage to bike or parts, or rider injury caused by defects as covered in this warranty.

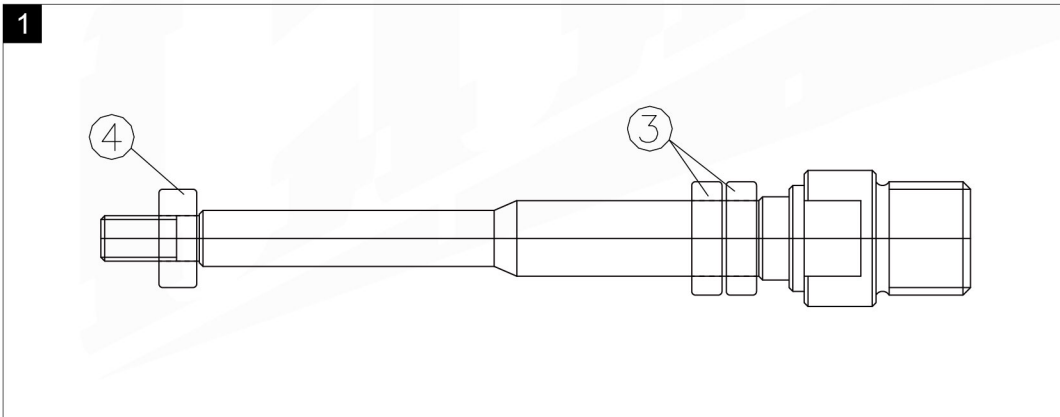


Model name / Model no.

PAD-04 Repair Kit

Part

- ① Right Axle x1
- ② Left Axle x1
- ③ Bearing(15x10mm) x4
- ④ Bearing(13x6mm) x2



Installation Instructions:

1. Inspect the product for any defectives before installation and please contact the dealer or distributor if any.
2. Insert two Bearing ③ to Axle. (Ø15x10mm)
3. Insert Bearing ④ to Axle. (Ø13x6mm)